



- ✓ Analyze canola, canola meal, and oil
- ✓ Results in 30 seconds for protein, moisture, fat, fiber, oil quality, chlorophyll and more

Next Generation NIR Analyzer

The new Phoenix 6000 NIR Soybean Analyzer is the ideal solution for soybean processors that need highly accurate rapid results before, during and after production.

The Phoenix 6000 offers 30 second analysis of:

**Whole canola, canola meal,
canola oil and by-products**

If you have already developed databases on any other NIR platforms (FOSS™ Unity Scientific™), you can easily transfer them onto the Phoenix 6000 and begin generating reliable results immediately.

- Results in 30 seconds or less
- Monitor incoming whole canols
- Analyze meal to optimize extraction
- Determine oil quality (FFAs and peroxide value)
- Build COAs for finished product
- Transfer your existing databases from any NIR instrument
- User friendly software design
- Flexible data management

EXPLORE THE PHOENIX

Easy to Use Interface

- 12.3" Microsoft Surface Touchscreen
- Simple tab design
- Fast access to results
- Flexible data handling

All Phoenix instruments are manufactured at Blue Sun Scientific's headquarters in Jessup, Maryland.

NIR Monochromator

The most trusted NIR technology used by the food and agriculture industries

Innovative Sample Car

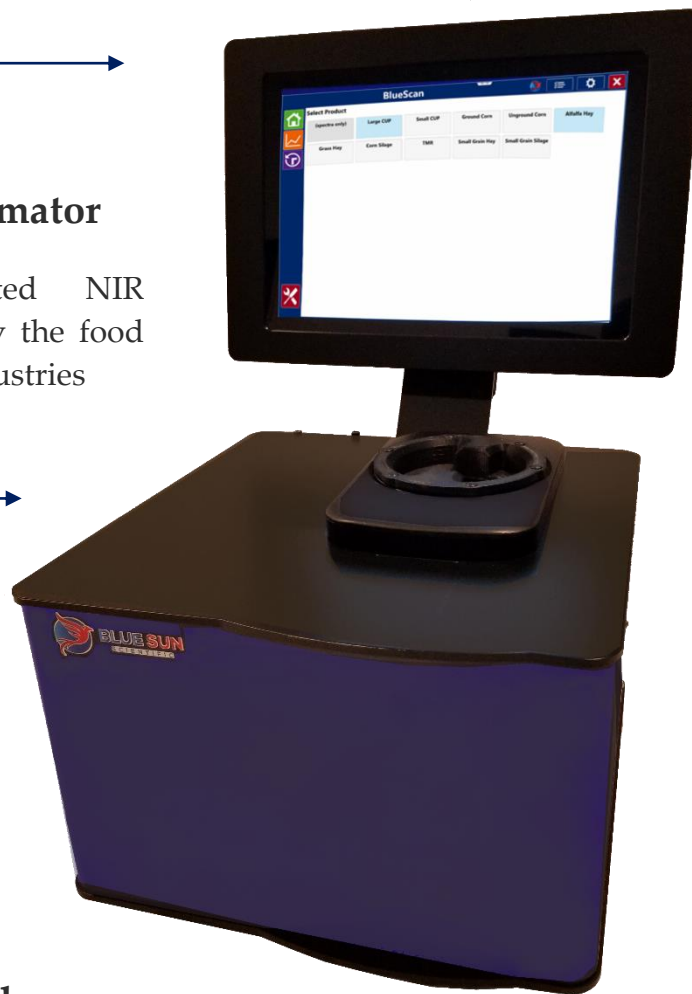
- Scans large and small cups
- Scans entire sample cup
- Integrated standards

Easy to Access Lamp

The 10,000-hour lamp can be replaced in under 5 minutes with no special tools needed.

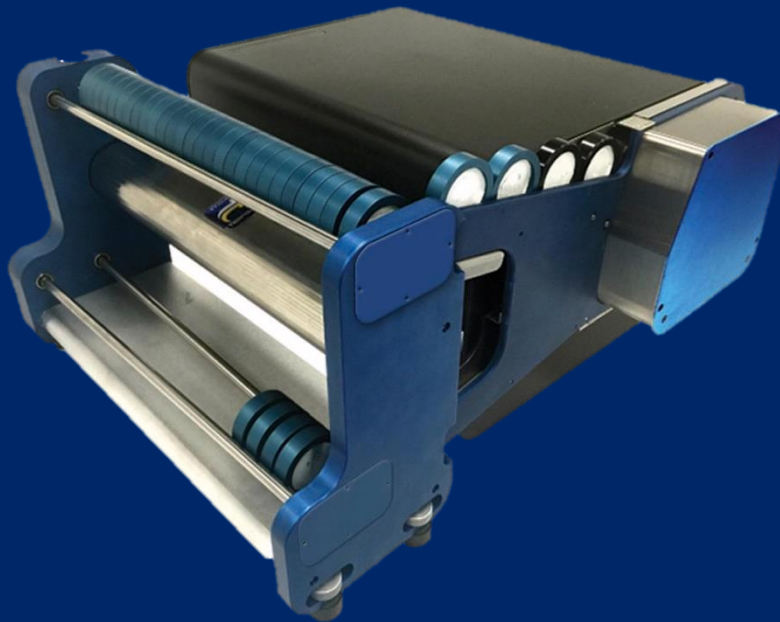
Fully Sealed

- Rugged and robust
- Ideal for in-lab or at-line analysis



HIGHLY ACCURATE, RUGGED AND EASY TO MAINTAIN

30 Position Auto-Sampler



Some labs receive hundreds to thousands of samples each season. This volume of testing can quickly consume an operator's entire day.

To meet this demand, the Phoenix 6000 is also available in a side-loading configuration with an optional autosampler.

Our state-of-the-art auto sampler can be quickly programmed to run up to 30 samples in standard ISI ring cups.

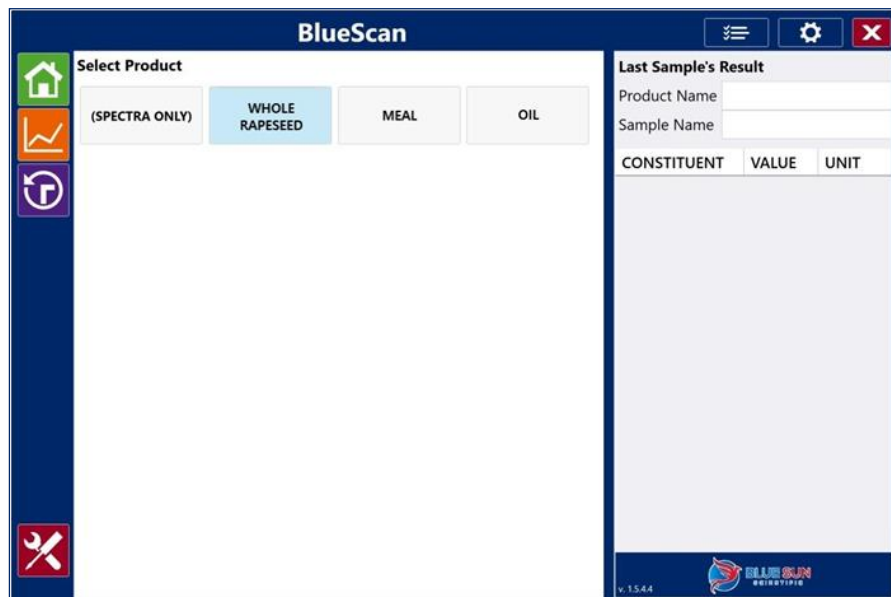
Each cup can be scanned via RFID reader. An integrated sensor on the Phoenix 6000 matches the cup's RFID to the scan results.

The operator can leave the instrument to perform the tests unattended while they concentrate on other testing and responsibilities around the lab.



Introducing BlueScan

Designed for Ease of Use



The Phoenix 6000 is powered by BlueScan. BlueScan is designed to simplify routine analysis and is packed with features making it ideal for monitoring quality and optimizing production.

BlueScan's tab design ensures your information is just a click away. You can easily view results, historical data, spectra, generate reports and run diagnostics with the press of a button.

Keep Your Database

The Phoenix 6000 Canola Analyzer comes ready to analyze many canola products.

If you have existing calibrations that you have built and would like to keep, you can with the Phoenix 6000.

The Phoenix 6000 is backwards compatible with databases from many major NIR manufacturers, including FOSS™, and Unity Scientific™.



Monitor quality of incoming whole seeds



Optimize oil during pressing and extraction



Determine oil quality (FFA and peroxide value)

Specifications

Hardware

Dimensions	14.0 in x 15.0 in x 20.75 in ; 356 mm x 381 mm x 527 mm (LxWxH)
Weight	24 lbs ; 11 kg
IP Rating	62
Power Connection	Via external power supply; Input:100-240VAC, 50/60Hz, 65watt Output: 24VDC, 2.7A.
Light Source	Tungsten Quartz Halogen Lamp, MTBF > 10k hours
Measurement Mode	Reflectance or Transflectance
Detector	2 High Performance InGaAs extended ranged detectors
Wavelength Selection	Scanning diffraction grating monochromator with nominal bandwidth of 10nm (FWHH). Configurable Data presented in 0.5nm, 1nm or 2nm increments

Performance

Wavelength Range	600-2500 nm
Number of Data Points	Up to 3800
Analysis Time	10-60 seconds (24 scans / sample = 32 seconds)
Wavelength Reproducibility	< 0.02 nm (based on Blue Sun Scientific specific diagnostic test)
Wavelength Accuracy	< 0.3 nm for Blue Sun selected published peak positions of NIST SRM 1920a standard
Photometric Noise	< 15 µAu in standard range

User Interface






Display	12.3" Microsoft Surface Pro Touch Screen running Windows 10
Data Export Options	LIMS, Modbus, Excel

Installation Requirements

Ambient Temperature	10-40°C
Storage Temperature	-20-40°C
Ambient Humidity	< 85% RH
Mechanical Environment	Stationary during use
EMC environment	Laboratory use, Industry requirements

Blue Sun Guarantee

Every Phoenix 6000 is backed by our industry leading warranty program which guarantees you receive fast, reliable support from industry experts you can trust at a fair market price. It includes **free**:

-  Phone Support
-  Remote Support
-  Software Upgrades
-  Calibration Development (1 Year)
-  Warranty on Parts (1 Year)